

Water System Improvements Project Status Update

Martin County Water District

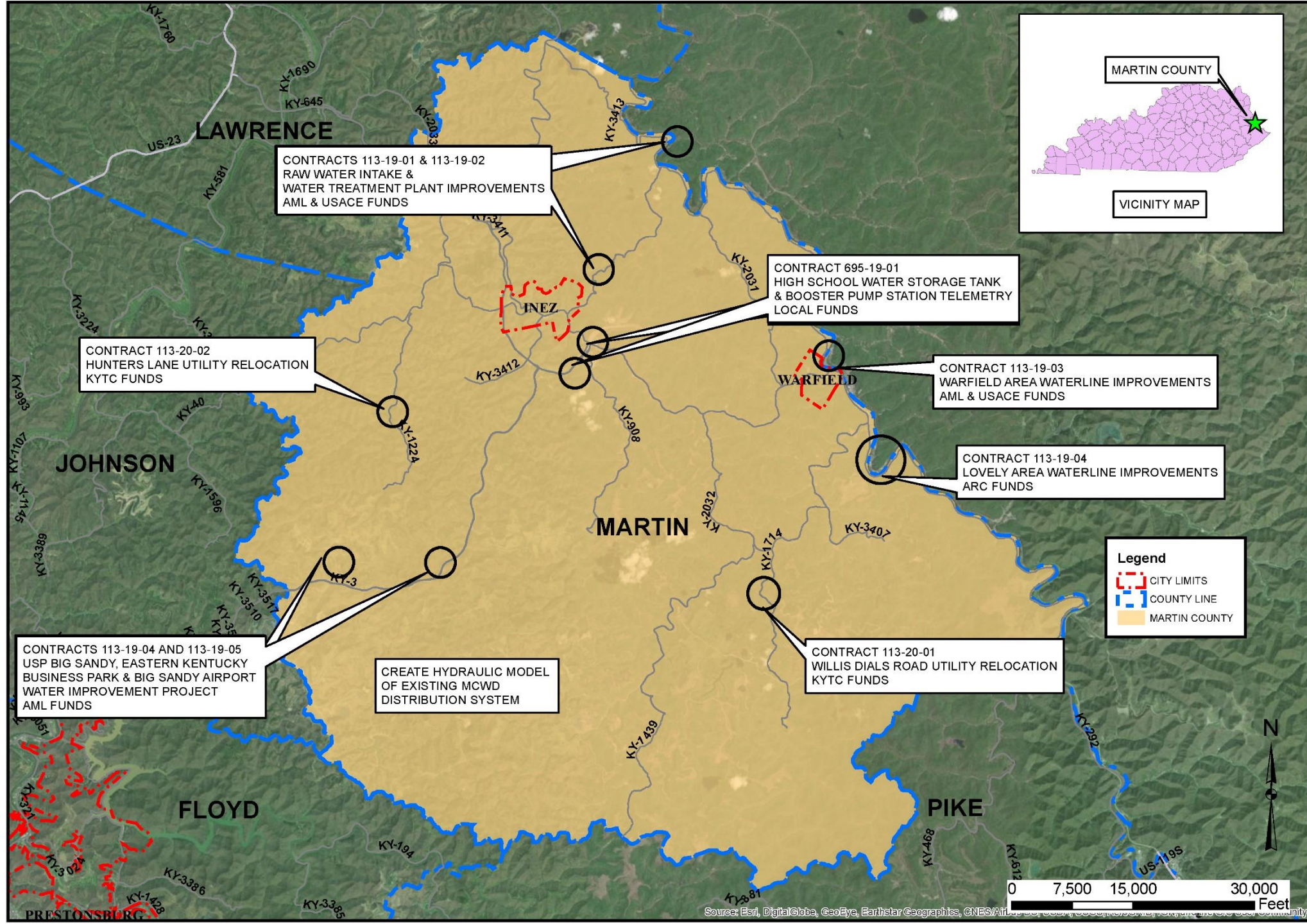
May 12, 2021

Status Report (BSADD/Bell)

► Funding

- AML Pilot NEXUS Grant (2017) - \$3,450,000
- COE 531 Partnership - \$1,869,718
- ARC Grant - \$1,200,000
- AML Pilot NEXUS Grant (2018) - \$2,000,000
- KYTC Bridging Kentucky Funds - Willis Dials / Dan's Branch Road - \$38,357
- Hunters Lane & Rockhouse Creek - To Be Determined
- KYTC KY 908 Guardrail Project - To Be Determined

► Total Grant Funding - \$8,558,075



ALL RIGHTS RESERVED
THIS DOCUMENT IS THE PROPERTY OF BELL
ENGINEERING. IT SHALL NOT BE REPRODUCED,
IN WHOLE OR IN PART OR USED FOR CONSTRUCTION
OF OTHER THAN THIS SPECIFIC PROJECT WITHOUT
THE WRITTEN PERMISSION OF BELL ENGINEERING



Contract 113-19-01

RWI Improvements Pump Purchase Only

► Purchase of:

- New 2 MG Raw Water Intake Pump with Variable Speed Drive
- New 4 MG Raw Water Intake Pump with Variable Speed Drive
- New 4,000 GPM River Screen

► Budget: \$601,200

► Funding: Abandoned Mine Lands 2017 NEXUS

► Status:

- Complete
- MCWD has use of the 2 MGD Pump.
- 4 MGD Pump to be placed in service upon completion of the RWI/WTP Project.



Contract 113-19-02

RWI & WTP Improvements

► Raw Water Intake Improvements:

- Concrete Ramp & Winch System for Moving Raw Water Pumps Up & Down Slope
- Electrical Building Upgrade, Telemetry, Line Reactors and Instrumentation

► Water Treatment Plant Improvements:

- Clarifiers 1 & 3 Rehabilitation with New Valve Vault for Clarifier 1
- Replace Outside Chlorine Chemical Feed Piping & Roof On Chemical Storage Building
- Replace Master Meter
- 500 KVA on-site Backup Generator

► Project Budget: Construction Budget: \$2,477,850

► Funding: Abandoned Mine Lands 2017 NEXUS & Army Corps of Engineers

Contract 113-19-02 (Continued)

RWI & WTP Improvements

► Status:

- Bids for the project rebid were opened on April 13th.
- Summary of Bids:

One Bid was received.

Base Bid: \$3,858,387

Base Bid plus Additive Alternates: \$4,003,722

- The MCWD has had discussions with AML and USACE the possibility of moving money from the Warfield Line Replacement Project to the RWI/WTP Project to address the overage.

The MCWD is entering into negotiations with the low bidder concerning the bid alternates and other potential money saving project modifications.

Intent is to award RWI /WTP Project and move forward with construction as soon as negotiations are complete and agency concurrence is obtained.



Contract 113-19-03

Mainline, Service Line, Meter Replacement

- ▶ **Replace in the Warfield Area:**
 - Existing Mainline
 - Existing Meters & Service Line
 - Existing Valves & Hydrants
- ▶ **Total Construction Budget: \$992,000**
- ▶ **Funding: Abandoned Mine Lands 2017 NEXUS & Army Corps of Engineers**



Contract 113-19-03 (Continued)

Mainline, Service Line, Meter Replacement

► Status

- Bids for the project rebid were opened on April 13th.
- Bids:
 - 3 Bids were received
 - Base Bid: \$910,463.40
 - Base Bid plus Additive Alternates: \$1,736,825.40
- Due to overage on the RWI/WTP Project, the intent is to defer construction of this project to a later date and use the funds associated with this project for construction of the RWI/WTP Project.
- The District is submitting funding requests in an effort to obtain funding to construct this project as soon as possible.

Contract 113-19-04

Mainline, Service Line, Meter Replacement

- ▶ **Upgrades in the Lovely Area include the Replacement of:**
 - Existing Mainline, Meters, Service Line, Valves & Hydrants
- ▶ **Budget:** \$1,200,000
- ▶ **Funding:** Appalachian Regional Commission (ARC)
- ▶ **Status:**
 - Project construction is nearing completion.



Contracts 113-19-05 & 113-19-06

USP Big Sandy, Eastern Kentucky Business Park & Big Sandy Airport Water Improvements

► Upgrades Include:

- Construction of 250,000 Gallon Water Storage Tank, New 400 GPM Pump Station and telemetry
- Upgrade of the Existing Davella Pump Station
- Master Meter & Booster Chlorination

► Budget: \$2,000,000

► Funding: Abandoned Mine Lands 2018 NEXUS

► Status:

- A previously selected tank site cannot be used.
- While a new tank site is being finalized, design of the pump station, master meter and chlorination system are ongoing.



Contract 695-19-01

High School Water Storage Tank & Booster Pump Station Telemetry

- ▶ **Upgrades Include:**
 - Add telemetry to the Holly Bush Pump Station
 - Add telemetry to the High School Water Storage Tank
- ▶ **Budget:** \$65,000
- ▶ **Funding:** Local Funds (Martin County Fiscal Court)
- ▶ **Status:**
 - All equipment installed and operating.



Contract 113-20-01

Willis Dials/Dan's Branch Road Utility Relocation

► Upgrades Include:

- Relocation of existing waterline to facilitate construction of a new bridge for the KYTC Bridging Kentucky Program

► Budget: \$38,357

► Funding: KYTC

► Status:

- Project approved by Division of Water August 13, 2020.
- Construction completed September 24, 2020.
- Relocated line is in operation.



Contracts 113-20-02 and 113-20-03

Hunters Ln. & Rockhouse Creek Utility Relocations

► Upgrades Include:

- Relocation of existing waterline to facilitate construction of two new bridges for the KYTC Bridging Kentucky Program

► Budget: To Be Determined

► Funding: KYTC

► Status:

- Developing project scope with Bizzack Construction and Alliance Resources. Construction scheduled for later in 2021.



KY 908 Guardrail Project

► Upgrades Include:

- Relocation of existing 14" waterline along Route 908 to facilitate installation of new guardrail.

► Budget: To Be Determined

► Funding: KYTC

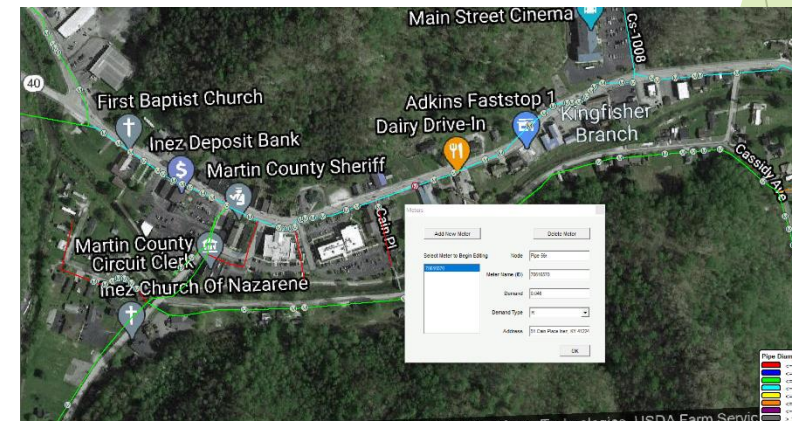
► Status:

- Awaiting additional directive from KYTC.



Martin County Water District Hydraulic Model

- ▶ Prepare and Calibrate a Hydraulic Model of the Martin County Water District System
- ▶ Budget: \$100,000
- ▶ Funding: Abandoned Mine Lands 2017 NEXUS
- ▶ Status:
 - Lines, tanks and PRVs have been input into the model and location field verified.
 - Line sizes have been verified.
 - Pressure zones have been analyzed.
 - Usage data has been entered into the model.
 - Model has been calibrated with field collected data.
 - Model has been checked against field observations.
 - Bell Model has been shared with University of Kentucky.
 - UK has shared their model with Bell.



Discussion/Questions